

AR202003

BLP15H9S100 50V 1700-1850MHz

V1.0 — 04-27-2022

AMPLEON

Application Report

Document information

Info	Content
Status	General Publication
Author(s)	Hannah Chalas
Keywords	BLP15H9S100 50V Class AB 1700-1850MHz
Abstract	Measurement results of a Class AB design for the 1700-1850MHz band with BLP15H9S100.

1 Revision History

Table 1. Report revisions

Revision No.	Date	Description	Author
1.0	04-27-2022	Board #AR192191 renamed to AR202003	Hannah Chalas

2 Contents

- 1 Revision History 2
- 2 Contents 2
- 3 List of Figures 2
- 4 List of Tables 3
- 5 General Description 4
- 6 Biasing & Pinout 4
- 7 Performance Indicators 5
- 8 Performance Details 6
- 8.1 Network Analyzer Frequency Sweep — Gain, IRL, and Group Delay 6
- 8.2 Network Analyzer Power Sweep — Pulsed CW (20µs Pulse Width, 10% DC) 8
- 8.3 Power Sweep — Pulsed CW (100µs Pulse Width, 10% Duty Cycle) 10
- 8.4 Power Sweep — CW 12
- 9 Hardware 13
- 9.1 Board photograph 13
- 9.2 PCB layout 14
- 9.3 Bill of materials 15
- 9.4 PCB materials 15
- 10 Legal Information 16
- 10.1 Contact information 16

3 List of Figures

- Figure 1. Gain & IRL vs Frequency 6
- Figure 2. Group Delay vs Frequency 7
- Figure 3. AM/AM 8
- Figure 4. AM/PM 9
- Figure 5. Gain and Drain Efficiency vs Output Power 10
- Figure 6. Output compression point vs Frequency 11
- Figure 7. Gain and Drain Efficiency vs CW Output Power 12
- Figure 8. Demo board top view 13
- Figure 9. PCB layout and assembly 14

4 List of Tables

Table 1. Report revisions.....	2
Table 2. Typical performance at <i>center</i> frequency	5
Table 3. Device specifics.....	5
Table 4. PNA-X Pulsed CW.....	6
Table 5. MXG Pulsed CW	10
Table 6. MXG CW.....	12
Table 7. Bill of materials	15
Table 8. Board specifications.....	15

5 General Description

This report presents the measurement results of the Class AB demo board AR192191. The device used is a 100W, 9th generation LDMOS in a SOT1482-1 overmolded plastic package, BLP15H9S100. The presented demo is optimized for the frequency band 1700-1850MHz.

6 Biasing & Pinout

The efficiencies presented are based on the current of the drain feed.

Parameter	At board connector
V_{DD}	= 50V
I_{DQ}	= 170mA

7 Performance Indicators

Table 2. Typical performance at *center* frequency

Parameter	Condition	Unit	Pulsed-CW	1cWCDMA ¹
VDD		V	50	50
Normalized AM-PM ²	Max, @P3dB	°	-3.4	—
PAR input signal ³	CCDF=0.01%	dB	—	10
P1dB ^{3,4}	GMAX-1dB	dBm	50.6	—
P3dB ^{3,4}	GMAX-3dB	dBm	51.5	—
PPEAK ⁵	PAR-3dB	dBm	—	51.3
POUT of operation ⁶	Po	dBm	50	—
GAIN	@Po	dB	16.1	—
Drain Efficiency	@Po	%	48.7	—
ACPR(L/U), 3.84MHz, ±5MHz	@Po	dBc	—	—

Table 3. Device specifics

Parameter	Value
Manufacturer	AMPLEON
Device	BLP15H9S100
Marking	AMPLEON BLP15H9S100TA W6N927C02 NH1916
Package	SOT1482-1

¹ Unclipped

² PCW Pulse sweep with 20µs Pulse Width, 10% Duty Cycle

³ MXG CW Pulse sweep with 100µs Pulse Width, 10% Duty Cycle

⁴ Pout at 1 and 3dB gain compression relative to the maximum gain in the power sweep

⁵ When output PAR of modulated signal is compressed by 3dB

⁶ Demonstrator is expected to operate at the Po average power level

8 Performance Details

8.1 Network Analyzer Frequency Sweep – Gain, IRL, and Group Delay

Table 4. PNA-X Pulsed CW

Freq (MHz)	IRL (dB)	Gain (dB)	Group Delay (ns)
1700	-4.7	13.0	3.2
1775	-4.6	13.6	3.2
1850	-12.2	14.5	6.6

AMPLEON

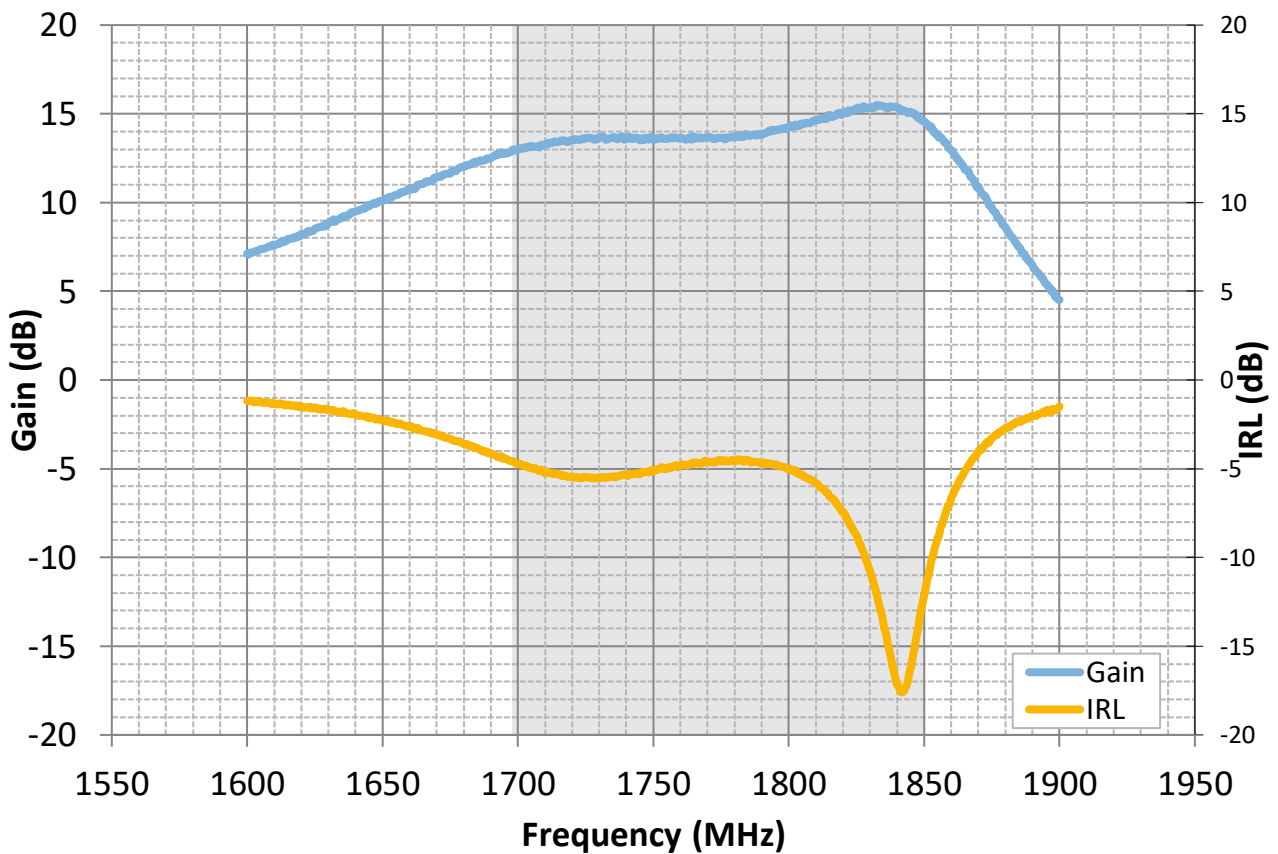


Figure 1. Gain & IRL vs Frequency

AMPLEON

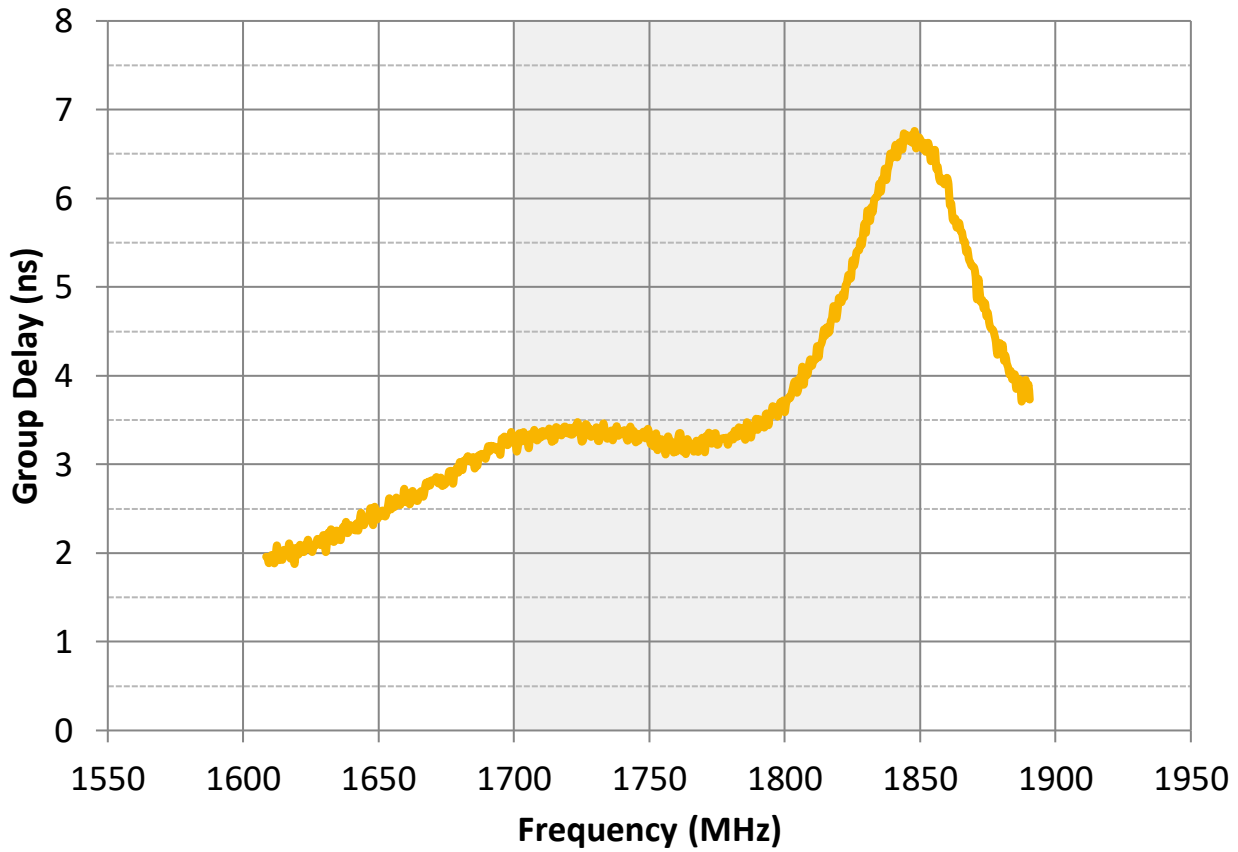


Figure 2. Group Delay vs Frequency

8.2 Network Analyzer Power Sweep — Pulsed CW (20µs Pulse Width, 10% DC)

AMPLEON

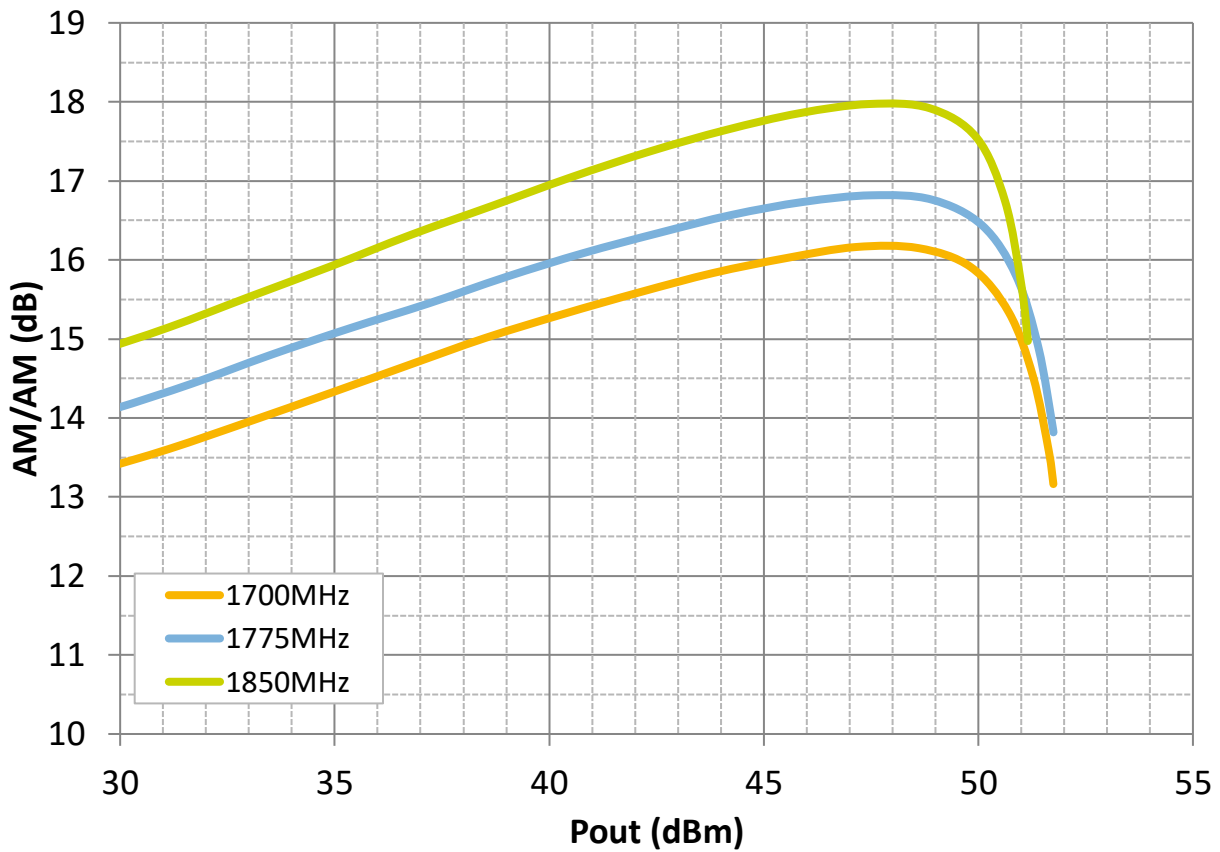


Figure 3. AM/AM

AMPLEON

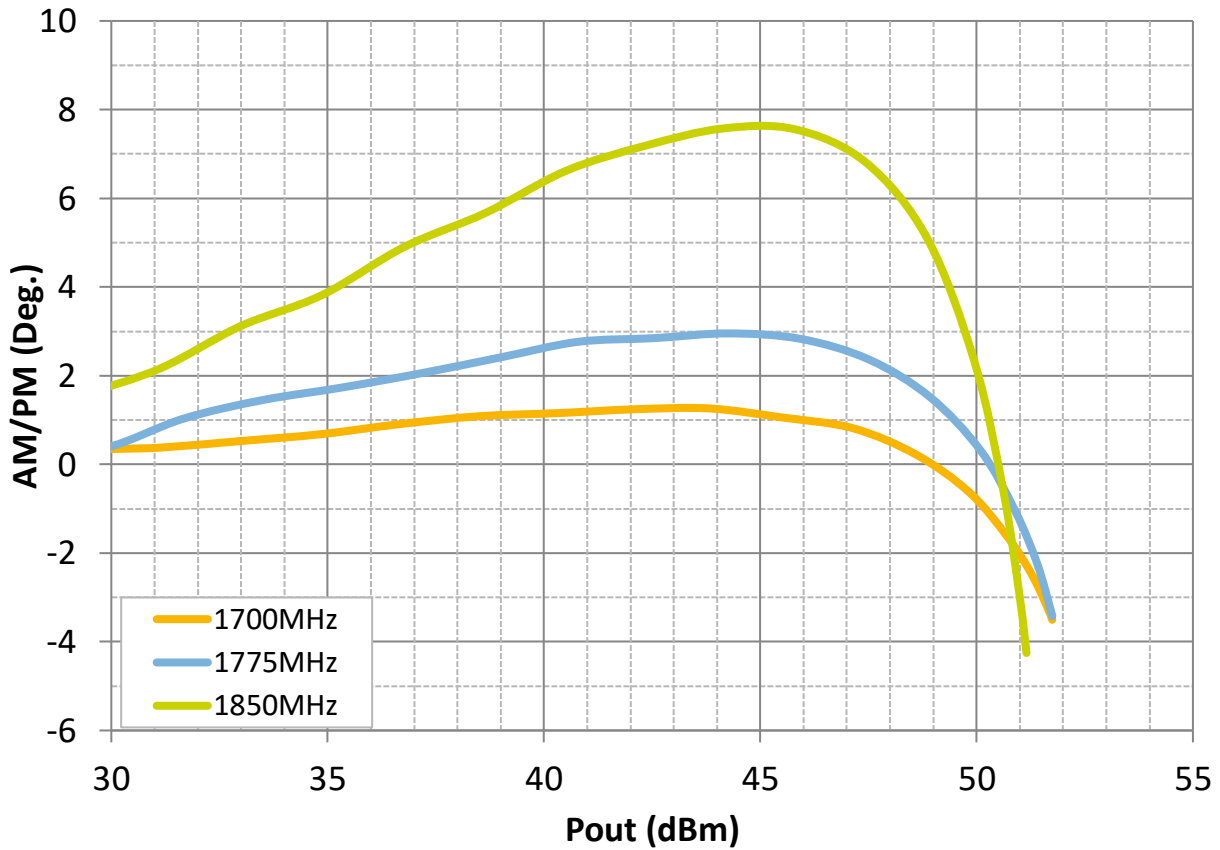


Figure 4. AM/PM

8.3 Power Sweep – Pulsed CW (100µs Pulse Width, 10% Duty Cycle)

Table 5. MXG Pulsed CW

Freq (MHz)	Pout (dBm)	Pout (W)	Gain (dB)	Eff (%)	P1dB (dBm)	P3dB (dBm)	P3dB(WCDMA10) (dBm)
1700	50.00	100.00	15.87	47.60	50.69	51.64	51.36
1775	50.00	100.00	16.14	48.78	50.64	51.59	51.31
1850	50.00	100.00	17.33	53.67	50.39	51.13	51.04

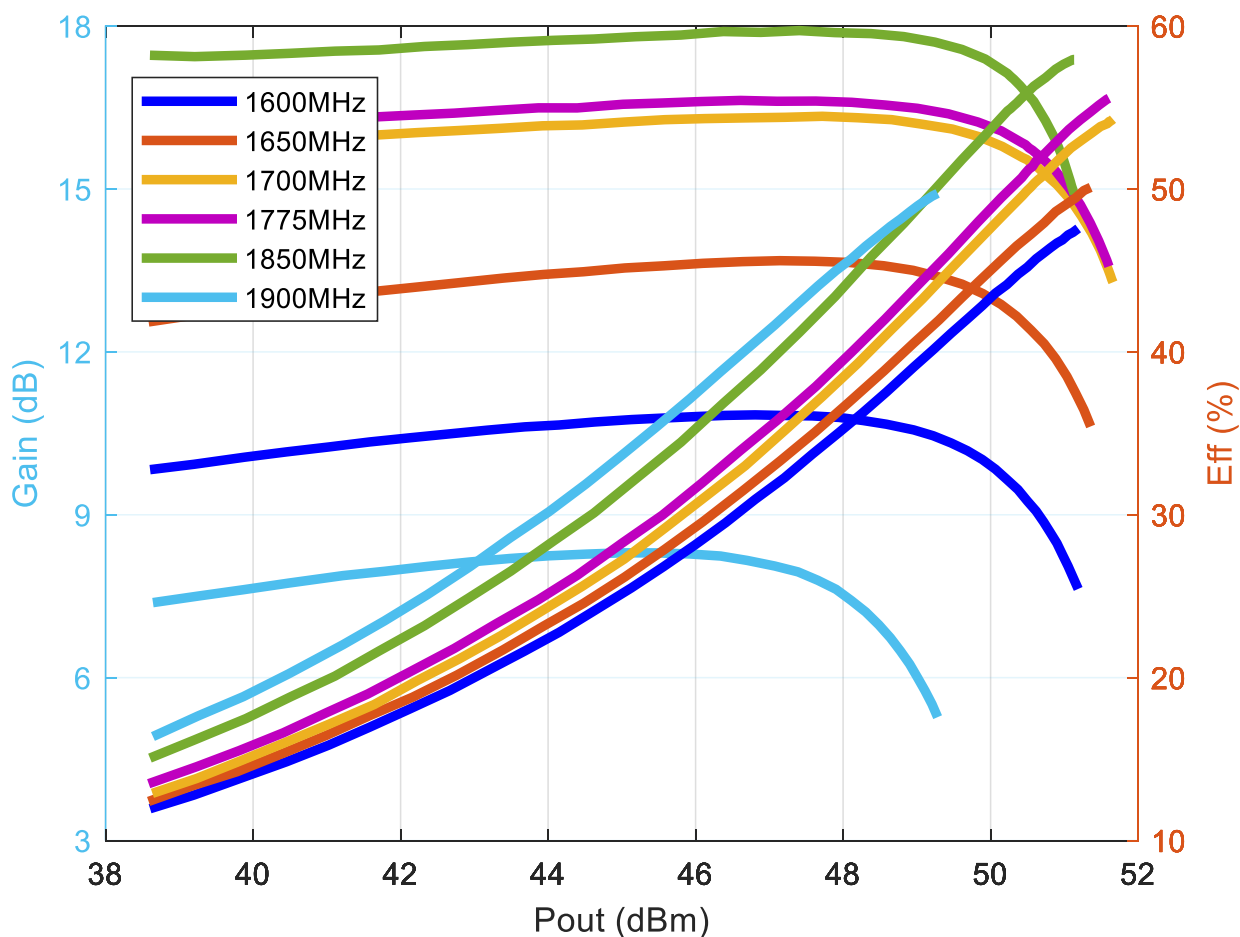


Figure 5. Gain and Drain Efficiency vs Output Power

AMPLEON

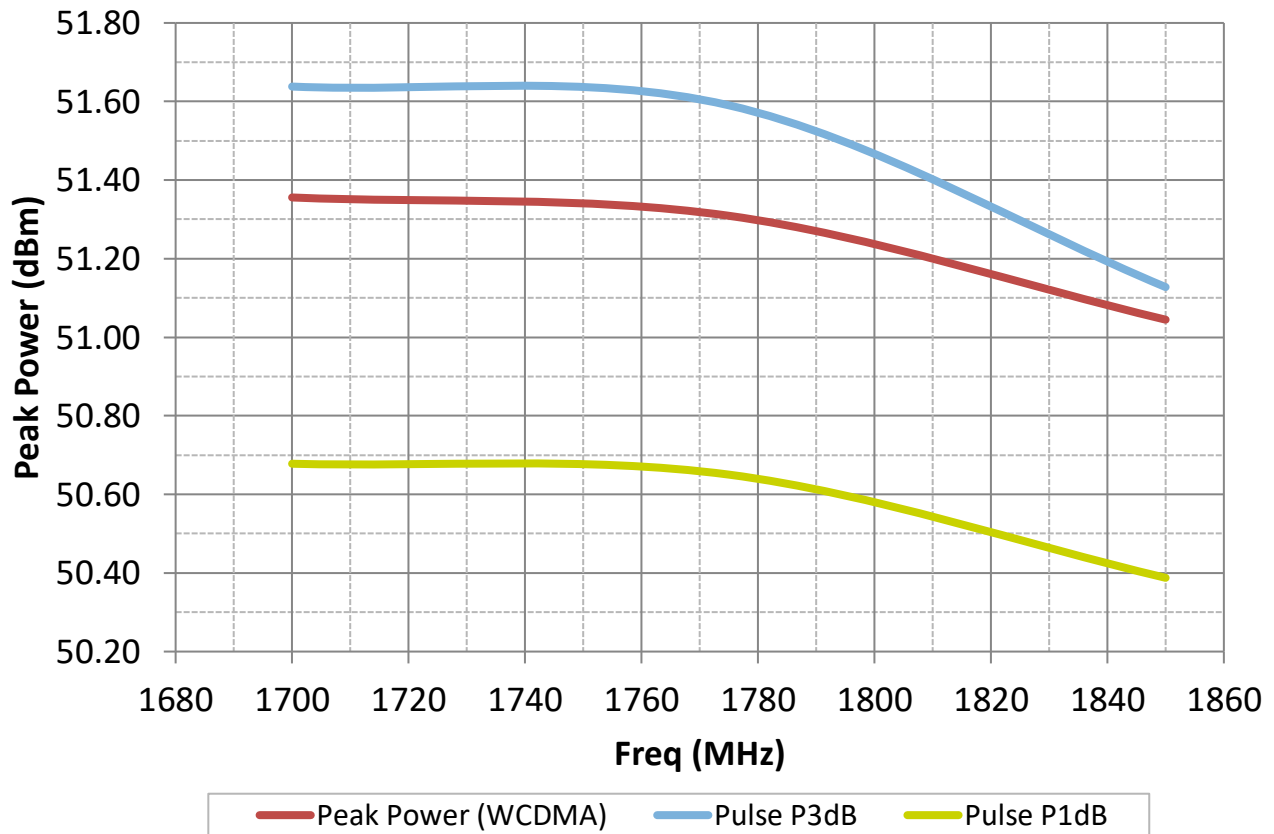


Figure 6. Output compression point vs Frequency

8.4 Power Sweep – CW

Table 6. MXG CW

Freq (MHz)	Pout (dBm)	Pout (W)	Gain (dB)	Eff (%)	P1dB (dBm)	P3dB (dBm)
1700	50.00	100.00	--	--	48.74	49.74
1775	50.00	100.00	12.56	47.07	48.91	49.93
1850	50.00	100.00	14.15	52.30	49.16	50.08

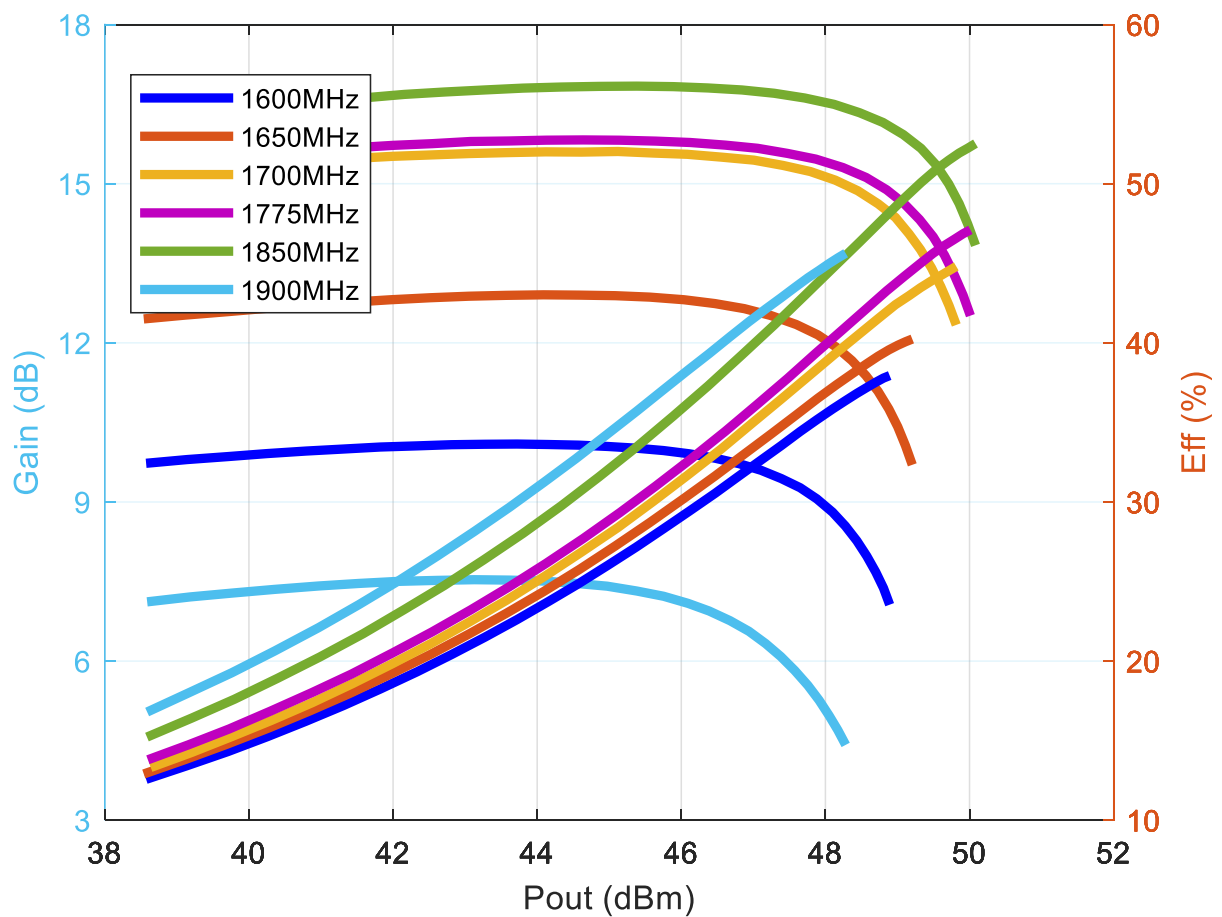


Figure 7. Gain and Drain Efficiency vs CW Output Power

9 Hardware

9.1 Board photograph

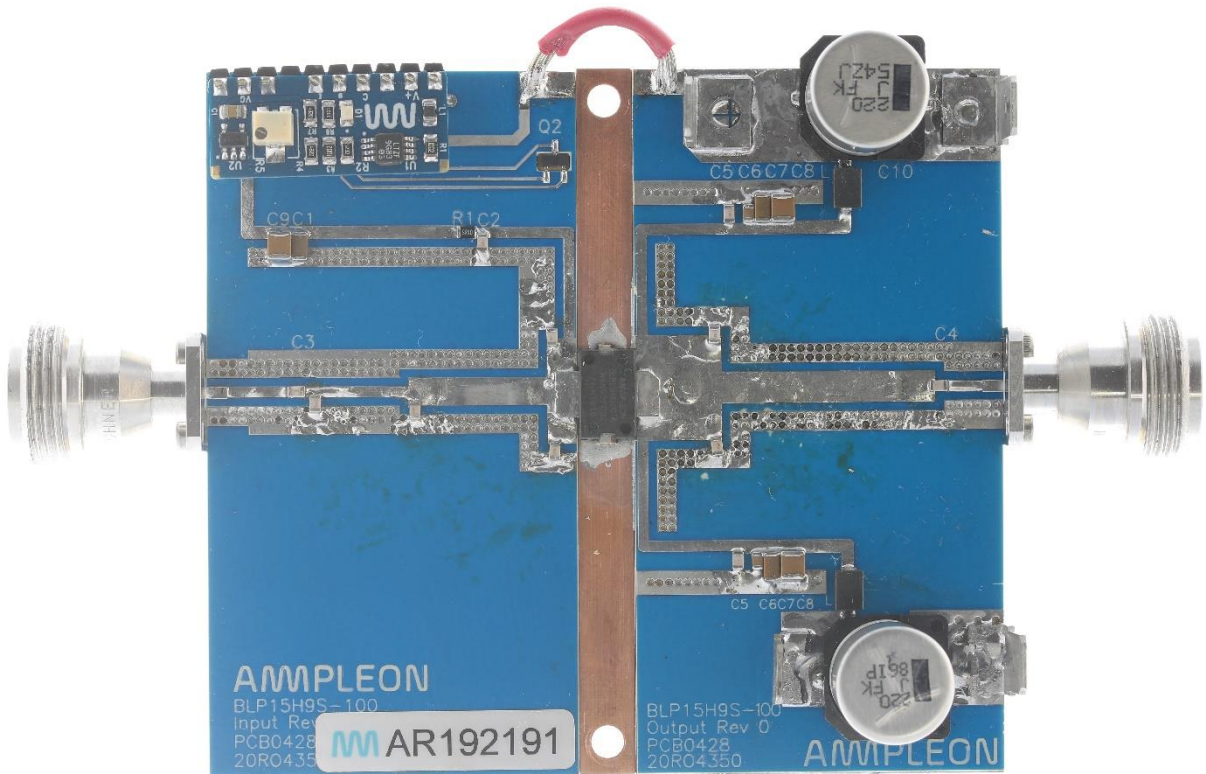


Figure 8. Demo board top view

9.2 PCB layout

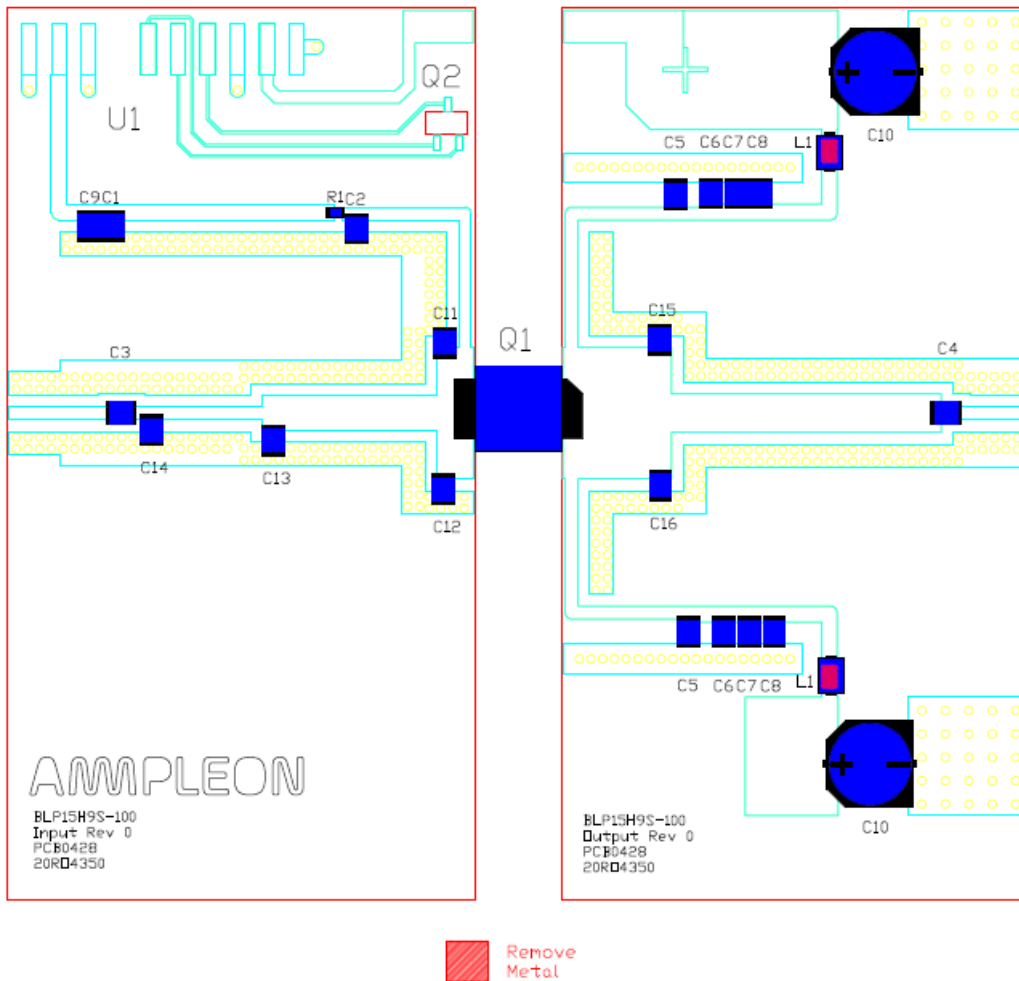


Figure 9. PCB layout and assembly

9.3 Bill of materials

Table 7. Bill of materials

Designator	Description	Manufacturer	Part #
Input Board	20mil RO4350B 1oz	Avanti	PCB0428 Input Rev 0
Output Board	20mil RO4350B 1oz	Avanti	PCB0428 Output Rev 0
Q1	LDMOS, Class AB 100W	Ampleon	BLP15H9S-100
Q2	2N2222 NPN Transistor	Fairchild	MMBT2222
U1	LDMOS bias module	Ampleon	CA-330-11
L1	Ferroxcube Bead	Fair Rite	Bead 2743019447
C1, C7	1uF, 1206, 100V, X7R, 10%	Murata	GRM31CR72A105KA01L
C2,C3,C4,C5	18pF, 0805, 250V, C0G, 2%	Murata	GQM2195C2E180GB12
C6	100nF, 0805, 100V, X7R, 10%	Murata	GRM21BR72A104KAC4L
C8, C9	10uF	Murata	GRM55DR61H106KA88L
C10	220uF	Panasonic	63V, Electrolytic capacitor
C11	5.1pF, 0805, 250V, +/- 0.1pF	Murata	GQM2195C2E5R1BB15
C12	5.6pF, 0805, 250V, +/- 0.1pF	Murata	GQM2195C2E5R6BB15
C13	5.0pF, 0805, 250V, +/- 0.1pF	Murata	GQM2195C2E5R0BB15
C14	3.9pF, 0805, 250V, +/- 0.1pF	Murata	GQM2195C2E3R9BB15
C15, C16	4.3pF, 0805, 250V, +/- 0.1pF	Murata	GQM2195C2E4R3BB15
R1	9.1 Ohm	Generic	0805

9.4 PCB materials

Table 8. Board specifications

Parameter	Value
Manufacturer	Rogers
Type	RO4350
Thickness	20mil
Layers	2, top/bottom. Bottom all copper, 1oz copper both sides

10 Legal Information

Definitions

Draft — The document is a draft version only. The content is still under internal review and subject to formal approval, which may result in modifications or additions. Ampleon does not give any representations or warranties as to the accuracy or completeness of information included herein and shall have no liability for the consequences of use of such information.

Disclaimers

Limited warranty and liability — Information in this document is believed to be accurate and reliable. However, Ampleon does not give any representations or warranties, expressed or implied, as to the accuracy or completeness of such information and shall have no liability for the consequences of use of such information. Ampleon takes no responsibility for the content in this document if provided by an information source outside of Ampleon.

In no event shall Ampleon be liable for any indirect, incidental, punitive, special or consequential damages (including - without limitation - lost profits, lost savings, business interruption, costs related to the removal or replacement of any products or rework charges) whether or not such damages are based on tort (including negligence), warranty, breach of contract or any other legal theory.

Notwithstanding any damages that customer might incur for any reason whatsoever, Ampleon's aggregate and cumulative liability towards customer for the products described herein shall be limited in accordance with the Terms and conditions of commercial sale of Ampleon.

Right to make changes — Ampleon reserves the right to make changes to information published in this document, including without limitation specifications and product descriptions, at any time and without notice. This document supersedes and replaces all information supplied prior to the publication hereof.

Suitability for use — Ampleon products are not designed, authorized or warranted to be suitable for use in life support, life-critical or safety-critical systems or equipment, nor in applications where failure or malfunction of an Ampleon product can reasonably be expected to result in personal injury, death or severe property or environmental damage. Ampleon and its suppliers accept no liability for inclusion and/or use of Ampleon products in such equipment or applications and therefore such inclusion and/or use is at the customer's own risk.

Applications — Applications that are described herein for any of these products are for illustrative purposes only. Ampleon makes no representation or warranty that such applications will be suitable for the specified use without further testing or modification.

Customers are responsible for the design and operation of their applications and products using Ampleon products, and Ampleon accepts no liability for any assistance with applications or customer product design. It is customer's sole responsibility to determine whether the Ampleon product is suitable and fit for the customer's applications and products planned, as well as for the planned application and use of customer's third party customer(s). Customers should provide appropriate design and operating safeguards to minimize the risks associated with their applications and products.

Ampleon does not accept any liability related to any default, damage, costs or problem which is based on any weakness or default in the customer's applications or products, or the application or use by customer's third party customer(s). Customer is responsible for doing all necessary testing for the customer's applications and products using Ampleon products in order to avoid a default of the applications and the products or of the application or use by customer's third party customer(s). Ampleon does not accept any liability in this respect.

Export control — This document as well as the item(s) described herein may be subject to export control regulations. Export might require a prior authorization from competent authorities.

Trademarks

Notice: All referenced brands, product names, service names and trademarks are the property of their respective owners.

Any reference or use of any 'NXP' trademark in this document or in or on the surface of Ampleon products does not result in any claim, liability or entitlement vis-à-vis the owner of this trademark. Ampleon is no longer part of the NXP group of companies and any reference to or use of the 'NXP' trademarks will be replaced by reference to or use of Ampleon's own trademarks.

10.1 Contact information

For more information, please visit: <http://www.ampleon.com>

For sales office addresses, please visit: <http://www.ampleon.com/sales>